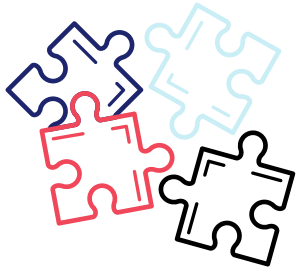
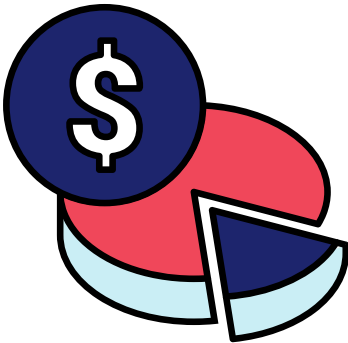


What does a **Support Coordinator** do?



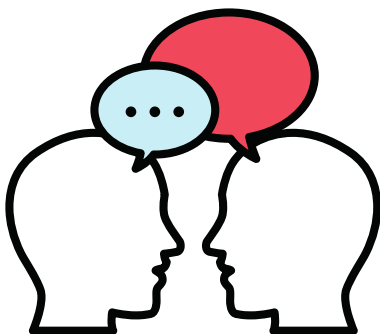
Support Coordinators work with participants to help them to understand the NDIS.



They help them to know what their funding can be used for, and how much support you can afford



They can help you get set up on the NDIS online portal



They can help you to answer any questions that you have about your plan.


Want more information?

Get in touch with us today, and we can help you to make sense of your NDIS plan.

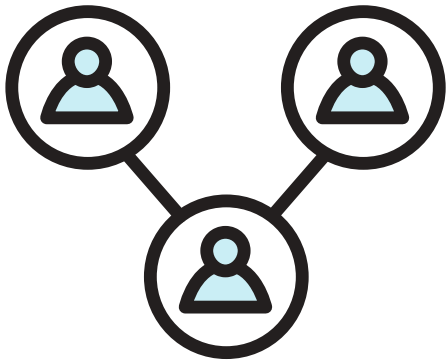
Contact us at:

 1800 024 000

 hello@plancare.com.au

 www.plancare.com.au





Support coordinators help to connect you to new services



Support coordinator's can help you get more involved in your community.



Support coordinators can also help you to do a review if there is something wrong with your plan.



They will also go to your planning meeting with you, if you want them to.


Want more information?

Get in touch with us today, and we can help you to make sense of your NDIS plan.

Contact us at:

 1800 024 000

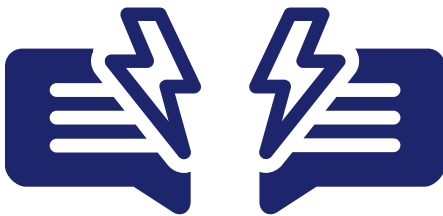
 hello@plancare.com.au

 www.plancare.com.au

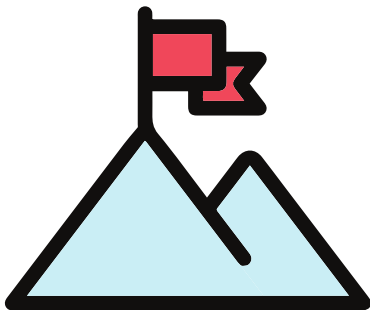




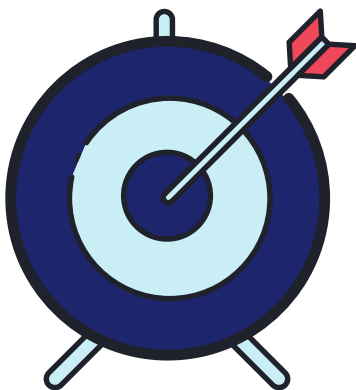
They can help you to understand service agreements



They can help to solve problems with your providers on your behalf



Your support coordinator should help you build your capacity, so that you can do more things on your own.



They should make sure all your providers are helping you to work towards your goals

Want more information?

Get in touch with us today, and we can help you to make sense of your NDIS plan.

Contact us at:

 1800 024 000
 hello@plancare.com.au
 www.plancare.com.au

