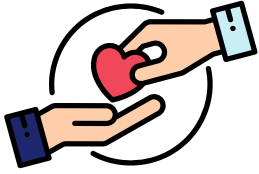
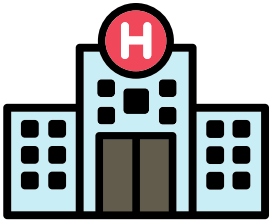


What does a **Social Worker** do?



Social workers work with people who need some help to make changes in their lives



They work in lots of areas, including disability services, hospitals, prisons, and in the government



Sometimes, they work with people who have had bad experiences in the past



Sometimes, they work with people who have some mental health issues, or use drugs and alcohol in a bad way.



Or they might have a disability, which impacts their ability to participate in the community or get a job



Social workers can help families to be more connected to each other

Want more information?

Get in touch with us today, and we can help you to make sense of your NDIS plan.

Contact us at:

 1800 024 000

 hello@plancare.com.au

 www.plancare.com.au





Social workers can help people who need support to find a place for them to live



They can connect people to a counsellor or psychologist, who can help them work through their problems



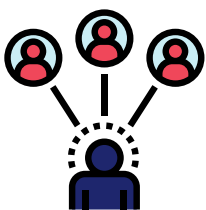
Social workers can connect you to services and programs in your local community, like a church or a sporting group



They can advocate for you (they can tell people what your needs and wants are)



They can help you transition from home to an aged care facility, or to a house where you live with some support



Social workers can also help coordinate all the different supports you have in your life.

Want more information?

Get in touch with us today, and we can help you to make sense of your NDIS plan.

Contact us at:

 1800 024 000

 hello@plancare.com.au

 www.plancare.com.au

