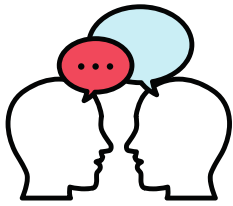


# What does a **Speech Pathologist** do?



Speech pathologists work with people who have trouble communicating, listening and understanding.



Speech pathologists work in lots of settings, including in hospitals, in aged care facilities, schools, private companies, and mental health facilities.



They work mainly with children, and people who have disabilities or health conditions that make it difficult to communicate.






You might need a speech pathologist to help you if other people have trouble understanding you.

## Want more information?

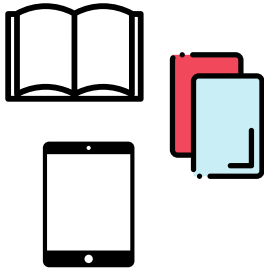
Get in touch with us today, and we can help you to make sense of your NDIS plan.

## Contact us at:

 1800 024 000  
 [hello@plancare.com.au](mailto:hello@plancare.com.au)  
 [www.plancare.com.au](http://www.plancare.com.au)



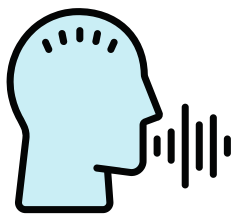
Speech pathologists can help people who can't speak to get special equipment to help them communicate.



This equipment could be software, communication cards, a booklet, or iPad.



They can also teach people how to swallow and eat safely.



Speech pathologists can help people if they speak too loud, or the tone of their voice isn't right.






They can also help if you have trouble expressing your feelings, ideas or thoughts.

### Want more information?

Get in touch with us today, and we can help you to make sense of your NDIS plan.

### Contact us at:

 1800 024 000  
 [hello@plancare.com.au](mailto:hello@plancare.com.au)  
 [www.plancare.com.au](http://www.plancare.com.au)